

UT1500/2200E

## UT Series

Fire-Resistance UPS with The Most Durable Capability For Protection



### APPLICATIONS

- Home and Home Office
- Small Office

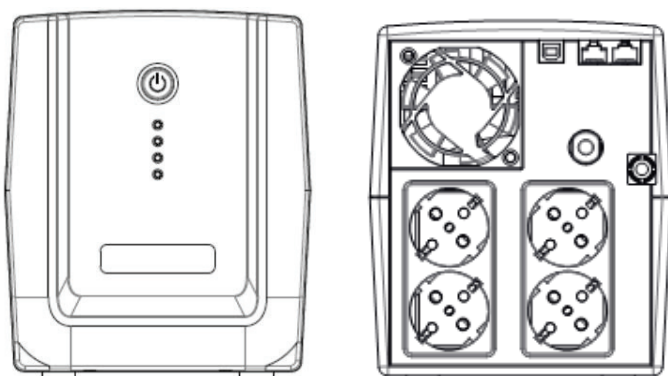
### SERIES FEATURES

- Automatic Voltage Regulation (AVR)
- EMI, RFI, Surge and Spike Protection
- Phone/Fax/Modem/DSL/Network
- Auto-Restart/Auto-Charge
- USB Connectivity Port
- LED Status Indicator
- Generator Compatible
- Fire-Resistance Capability
- Configurable Alarm
- Battery Management Technology
- PowerPanel® Personal Edition Software

Featuring with the best-in-class fireproof plastic housing, the UT series UPS provides an outstanding fire-resistance capability to minimize the possible damages of valuable assets in case of any fire incident.

With the built-in Automatic Voltage Regulation (AVR) stabilizes the AC signal and maintains a safe voltage, it allows the UPS to maintain safe power levels through Boost and Buck function for the connected equipment without resorting to battery power.

The included PowerPanel® Personal Edition management software showcases the feature rich abilities such as input/output power voltage readings, self-diagnostics, and approximate battery backup time.



FRONT

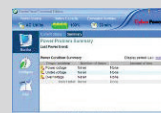
BACK

#### Automatic Voltage Regulation



Automatic Voltage Regulation provides clean, consistent AC power by automatically regulating low voltages and over voltages, within defined tolerances, when incoming utility power has minor fluctuations.

#### PowerPanel® Personal Edition Software System Graceful Shutdown Software



This software can provide orderly shutdown for your computer systems during the event of an extended AC power failure. This software supports Windows 10/8.1/8/7/Vista/XP and Server 2003/2008/2012. Compatible Linux software and Mac instructions are available for download on the website.

\*Software functions may vary due to firmware version and/or hardware constraints.



## TECHNICAL SPECIFICATIONS

| Model Name                              | UT1500E   | UT2200E                            |
|---|---|------------------------------------|
| <b>General</b>                          |   |                                    |
| UPS Topology                            | Line-interactive  | Line-interactive                   |
| Energy Saving                           | -   | -                                  |
| <b>Input</b>                            |   |                                    |
| Voltage                                 | 230Vac ± 10%  | 230Vac ± 10%                       |
| Input Voltage Range                     | 165 - 290Vac  | 165 - 290Vac                       |
| Input Frequency Range                   | 50/60Hz ± 10 (Auto-sensing)   | 50/60Hz ± 10 (Auto-sensing)        |
| Rated Input Current                     | 6.82A   | 10A                                |
| Plug Type                               | Schuko  | Schuko                             |
| <b>Output</b>                           |   |                                    |
| VA                                      | 1500  | 2200                               |
| Watt.                                   | 900   | 1320                               |
| On Battery Waveform                     | Simulated Sine Wave   | Simulated Sine Wave                |
| On Battery Voltage                      | 230Vac ± 10%  | 230Vac ± 10%                       |
| Automatic Voltage Regulation (AVR)      | Single Boost, Single Buck   | Single Boost, Single Buck          |
| On Battery Frequency                    | 50/60Hz ± 1%  | 50/60Hz ± 1%                       |
| Outlets - Total                         | 4   | 4                                  |
| Outlet Type                             | Schuko x 4  | Schuko x 4                         |
| Outlets - Battery & Surge Protected     | 4   | 4                                  |
| Outlets - Surge-only Protected          | -   | -                                  |
| Outlets - Battery Backup                | -   | -                                  |
| Typical Transfer Time                   | 4ms   | 4ms                                |
| <b>Battery</b>                          |   |                                    |
| Runtime at 60W (min)                    | 90  | 95                                 |
| Runtime at 90W (min)                    | 60  | 70                                 |
| Battery Type                            | Sealed Lead-acid  | Sealed Lead-acid                   |
| Battery Quantity                        | 2   | 2                                  |
| User Replaceable                        | -   | -                                  |
| Typical Recharge Time                   | 8 Hours   | 8 Hours                            |
| Replacement Battery Pack                | RBP0089   | RBP0090                            |
| Replacement Battery Pack Quantity       | 1   | 1                                  |
| <b>Surge Protection &amp; Filtering</b> |   |                                    |
| Surge Suppression (Joules)              | 125   | 125                                |
| Phone / Network Protection RJ11/RJ45    | 1-in, 1-out   | 1-in, 1-out                        |
| <b>Management &amp; Communications</b>  |   |                                    |
| LCD Control Panel                       | -   | -                                  |
| HID Compliant USB Port                  | 1   | 1                                  |
| Serial Port                             | -   | -                                  |
| LED Indicators                          | Power On, Line Mode, Battery Mode, Low Battery, Overload, UPS Fault |                                    |
| Audible Alarms                          | Battery Mode, Low Battery, Overload, UPS Fault                      |                                    |
| Software                                | PowerPanel® Personal Edition  | PowerPanel® Personal Edition       |
| <b>Physical</b>                         |   |                                    |
| Form Factor                             | Tower   | Tower                              |
| <b>Physical - UPS Module</b>            |   |                                    |
| Dimensions (WxHxD) (mm.)                | 148 x 178 x 298   | 148 x 178 x 298                    |
| Weight (kg.)                            | 9.1   | 10.8                               |
| <b>Environmental</b>                    |   |                                    |
| Operating Temperature                   | 32 °F to 104 °F / 0 °C to 40 °C                                     | 32 °F to 104 °F / 0 °C to 40 °C    |
| Operating Humidity                      | 0% - 90% Non-condensing   | 0% - 90% Non-condensing            |
| Operating Elevation                     | 0-10,000 feet (0-3,000 meters)                                      | 0-10,000 feet (0-3,000 meters)     |
| Storage Temperature                     | - 4 °F to 122 °F / -20 °C to 50 °C                                  | - 4 °F to 122 °F / -20 °C to 50 °C |
| Storage Relative Humidity               | 0% - 90% Non-condensing   | 0% - 90%                           |
| Online Thermal Dissipation              | 102 BTU/hr  | 170 BTU/hr                         |

#All specifications are subject to change without notice. ©2016 CyberPower Systems. All Trademarks are the property of their owners.

