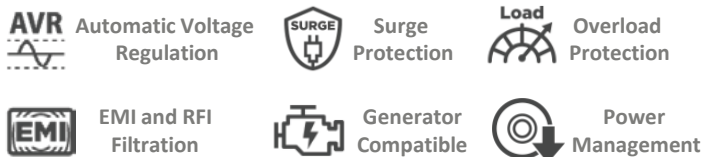


UT1500/2200E

UT Series

Fire-Resistance UPS with The Most Durable Capability For Protection



APPLICATIONS

- Home and Home Office
- Small Office

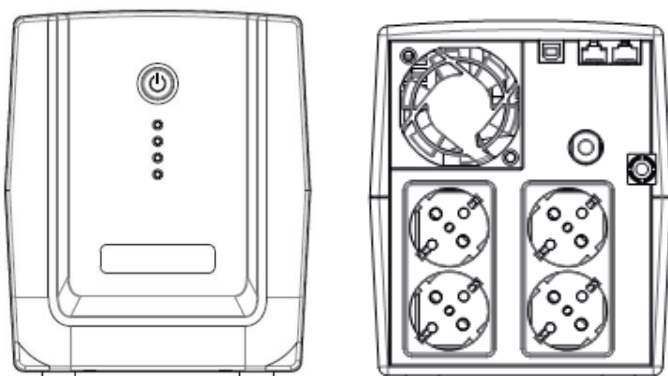
SERIES FEATURES

- Automatic Voltage Regulation (AVR)
- EMI, RFI, Surge and Spike Protection
- Phone/Fax/Modem/DSL/Network
- Auto-Restart/Auto-Charge
- USB Connectivity Port
- LED Status Indicator
- Generator Compatible
- Fire-Resistance Capability
- Configurable Alarm
- Battery Management Technology
- PowerPanel® Personal Edition Software

Featuring with the best-in-class fireproof plastic housing, the UT series UPS provides an outstanding fire-resistance capability to minimize the possible damages of valuable assets in case of any fire incident.

With the built-in Automatic Voltage Regulation (AVR) stabilizes the AC signal and maintains a safe voltage, it allows the UPS to maintain safe power levels through Boost and Buck function for the connected equipment without resorting to battery power.

The included PowerPanel® Personal Edition management software showcases the feature rich abilities such as input/output power voltage readings, self-diagnostics, and approximate battery backup time.



FRONT

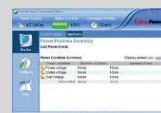
BACK

Automatic Voltage Regulation



Automatic Voltage Regulation provides clean, consistent AC power by automatically regulating low voltages and over voltages, within defined tolerances, when incoming utility power has minor fluctuations.

PowerPanel® Personal Edition Software System Graceful Shutdown Software



This software can provide orderly shutdown for your computer systems during the event of an extended AC power failure. This software supports Windows 10/8.1/8/7/Vista/XP and Server 2003/2008/2012. Compatible Linux software and Mac instructions are available for download on the website.

*Software functions may vary due to firmware version and/or hardware constraints.



TECHNICAL SPECIFICATIONS

Model Name	UT1500E	UT2200E
General		
UPS Topology	Line-interactive	Line-interactive
Energy Saving	-	-
Input		
Voltage	230Vac ± 10%	230Vac ± 10%
Input Voltage Range	165 - 290Vac	165 - 290Vac
Input Frequency Range	50/60Hz ± 10 (Auto-sensing)	50/60Hz ± 10 (Auto-sensing)
Rated Input Current	6.82A	10A
Plug Type	Schuko	Schuko
Output		
VA	1500	2200
Watt.	900	1320
On Battery Waveform	Simulated Sine Wave	Simulated Sine Wave
On Battery Voltage	230Vac ± 10%	230Vac ± 10%
Automatic Voltage Regulation (AVR)	Single Boost, Single Buck	Single Boost, Single Buck
On Battery Frequency	50/60Hz ± 1%	50/60Hz ± 1%
Outlets - Total	4	4
Outlet Type	Schuko x 4	Schuko x 4
Outlets - Battery & Surge Protected	4	4
Outlets - Surge-only Protected	-	-
Outlets - Battery Backup	-	-
Typical Transfer Time	4ms	4ms
Battery		
Runtime at 60W (min)	90	95
Runtime at 90W (min)	60	70
Battery Type	Sealed Lead-acid	Sealed Lead-acid
Battery Quantity	2	2
User Replaceable	-	-
Typical Recharge Time	8 Hours	8 Hours
Replacement Battery Pack	RBP0089	RBP0090
Replacement Battery Pack Quantity	1	1
Surge Protection & Filtering		
Surge Suppression (Joules)	125	125
Phone / Network Protection RJ11/RJ45	1-in, 1-out	1-in, 1-out
Management & Communications		
LCD Control Panel	-	-
HID Compliant USB Port	1	1
Serial Port	-	-
LED Indicators	Power On, Line Mode, Battery Mode, Low Battery, Overload, UPS Fault	
Audible Alarms	Battery Mode, Low Battery, Overload, UPS Fault	
Software	PowerPanel® Personal Edition	PowerPanel® Personal Edition
Physical		
Form Factor	Tower	Tower
Physical - UPS Module		
Dimensions (WxHxD) (mm.)	148 x 178 x 298	148 x 178 x 298
Weight (kg.)	9.1	10.8
Environmental		
Operating Temperature	32 °F to 104 °F / 0 °C to 40 °C	32 °F to 104 °F / 0 °C to 40 °C
Operating Humidity	0% - 90% Non-condensing	0% - 90% Non-condensing
Operating Elevation	0-10,000 feet (0-3,000 meters)	0-10,000 feet (0-3,000 meters)
Storage Temperature	- 4 °F to 122 °F / -20 °C to 50 °C	- 4 °F to 122 °F / -20 °C to 50 °C
Storage Relative Humidity	0% - 90% Non-condensing	0% - 90%
Online Thermal Dissipation	102 BTU/hr	170 BTU/hr

#All specifications are subject to change without notice. ©2016 CyberPower Systems. All Trademarks are the property of their owners.

